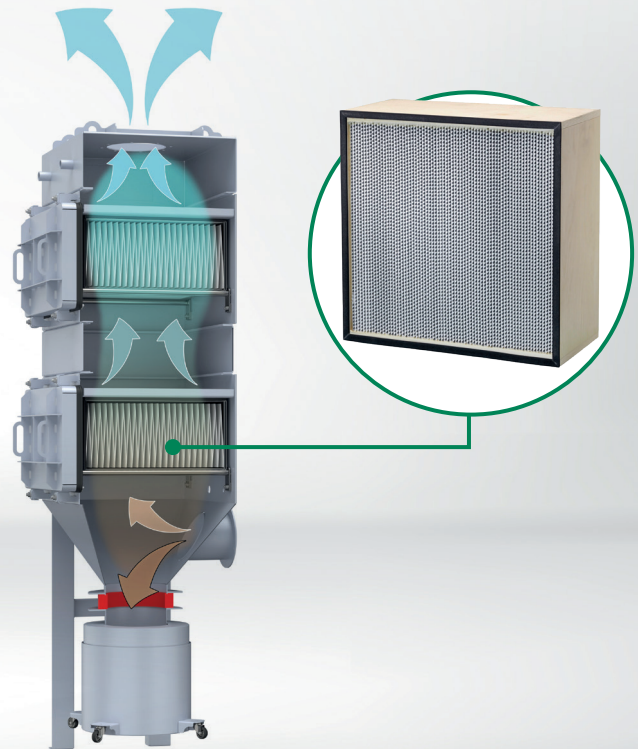


The Absolute D-Dust filter is a cleanable HEPA filter which is intended to be used in filter housings with an integrated cleaning system. As primary filter stage, Absolute D-Dust protects the final filter, especially when the particle concentration is around 0,05 mg/m³ or higher and therefore provide a longer filter life compared to static filter solutions. The filter is also available as an IECEx version for use in explosive atmospheres.

- ✓ Special reinforced glas fibre media
- ✓ Different options for frame material and gaskets
- ✓ IEC certified - IECEx SEV 22.0032X



APPLICATIONS

The Absolute D-Dust can be used in a wide variety of industrial applications where harmful dust is processed such as:

- Tablet production & packaging
- Chemical processes
- Battery cell production
- Decommissioning of nuclear power plants

INSTALLATION

The Absolute D-Dust HEPA filter can be installed in existing cleanable HEPA housings and is usually backed-up by a secondary filter stage which is a non-cleanable HEPA filter. When the system detects a specific pressure drop, the filter will be cleaned by compressed air.

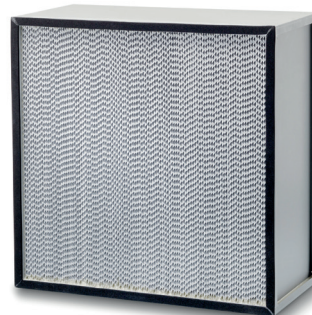
FILTER CLASS:

H13 according to EN 1822 (99,95 % at MPPS)

DOCUMENTATION:

- EN 1822 incl. scantest report
- IECEx user guide

METAL FILTER FRAME



SPECIFICATIONS

Type:	a) Standard cleanable HEPA filter b) Cleanable HEPA Filter for explosive atmospheres .../EA: Earthened version .../EX: IECEx certified version acc. to ISO 80079-36:2016, IECEx-marking Ex h IIC Gb, Ex h IIIB Gb.
Frame:	ABE = Galv. sheet metal; ABR = Stainless steel, 1.4301; ABD = Plywood (twelvefold glued)
Gasket:	P = Polyurethan, endless foamed, F = Flat gasket; D = DIN Gasket
Media:	Reinforced cleanable glass fibre
Separators:	Aluminium
Sealant:	Polyurethane
Grid:	R = Stainless steel, 1.4301
Filter class acc. to EN 1822:	H13
MPPS efficiency acc. to EN 1822:	≥99,95% at MPPS
Recommended final pressure drop:	2x initial pressure drop
Maximum temperature:	110°C
Relative humidity (max.):	100%
Remarks:	All filter tested acc. to EN 1822 with individual protocol. /EA: Wooden frame filter with separator grounding connector. /EX: Certified steel frame filter with separator grounding connector. Independently tested as a flame barrier in self-cleaning systems for organic dust ST2. Cleanable by reverse airflow. Other editions on request.

Type	Filter class	Frame material	Dimension WxHxD (mm)	Airflow / Pressure drop* (m³/h / Pa)	Media area (m²)	Freight volume (m³)
Absolute :: ABD13/F-610x610x292-OP-H/EA	H13	Plywood	610x610x292	1870/250	22.5	0.13
Absolute :: ABD13/F-610x610x292-PO-H/EA	H13	Plywood	610x610x292	1870/250	22.5	0.13
Absolute :: ABD13/F-610x610x292-OF-H	H13	Plywood	610x610x292	1870/250	22.5	0.13
Absolute :: ABD13/F-610x610x292-OP-Z/H	H13	Plywood	610x610x292	1870/250	22.5	0.13
Absolute :: ABD13/F-610x610x292-PO-Z/H/EA	H13	Plywood	610x610x292	1870/250	22.5	0.13
Absolute :: ABD13/F-610x610x292-DO-Z/H	H13	Plywood	610x610x292	1870/250	22.5	0.13
Absolute :: ABD13/F-915x610x292-OP-Z/H/EA	H13	Plywood	915x610x292	2670/250	33.5	0.19
Absolute :: ABR13/F-610x610x292-OF-H	H13	Stainless	610x610x292	1870/250	22.5	0.13
Absolute :: ABR13/F R0-610x610x292-F0-H/EX	H13	Stainless	610x610x292	1870/250	22.5	0.13
Absolute :: ABR13/F R0-610x610x292-F0-Z/2H/EX	H13	Stainless	610x610x292	1870/250	22.5	0.13
Absolute :: ABR13/F-610x610x292-FF-H/EX	H13	Stainless	610x610x292	1870/250	22.5	0.13
Absolute :: ABR13/F-610x610x292-DO-H	H13	Stainless	610x610x292	1870/250	22.5	0.13
Absolute :: ABE13/F-305x610x292-F0-H/EX	H13	Galvanised	305x610x292	860/250	10.4	0,07
Absolute :: ABE13/F-610x610x292-F0-Z	H13	Galvanised	610x610x292	1870/250	22.5	0.13
Absolute :: ABE13/F-610x610x292-F0-H	H13	Galvanised	610x610x292	1870/250	22.5	0.13
Absolute :: ABE13/F R0-610x610x292-F0-Z/2H/EX	H13	Galvanised	610x610x292	1870/250	22.5	0.13
Absolute :: ABE13/F-610x610x292-F0-Z	H13	Galvanised	610x610x292	1870/250	22.5	0.13
Absolute :: ABE13/F R0-610x610x292-F0-Z/EX	H13	Galvanised	610x610x292	1870/250	22.5	0.13
Absolute :: ABE13/F R0-610x610x292-F0-EX	H13	Galvanised	610x610x292	1870/250	22.5	0.13
Absolute :: ABE13/F R0-610x610x292-PO-EX	H13	Galvanised	610x610x292	1870/250	22.5	0.13

***Pressure drop ± 10%**

Gaskets: FO, PO, DO = gasket placed upstream | OF, OP = gasket placed downstream | FF = gasket both sides
 Grid: RO = stainless steel grid placed upstream
 Type: H = handle, 2H = 2 handles / Z = Special versions: Steel frame with slots for filter housings with clamping rails, wooden frame equipped with side rails.